



At a Glance



- Close to the **Historical City Center** and **Shopping Malls**
- Less than 6km from the **Airport**
- **160 guest rooms** and **suite** (Modern, air-conditioned rooms, offer work areas, up to 55'-inch HDTVs and Standard or Premium WiFi)
- **7 adaptable meeting spaces** with the latest audio-visual equipment, for up to 400 people
- 24-hour **fitness center** offering the latest TechnoGym equipment
- Harmonious outdoor **Winter Garden** with a relaxing waterfall
- **Saldanha Mar Restaurant**: Portuguese and Mediterranean dishes
- Sophisticated **Fontana Bar & Lounge** with intimate decor and dedicated reading space

DoubleTree by Hilton Lisbon - Fontana Park

Rua Eng.º Vieira da Silva, n.º2 1050-105,
Lisboa, Portugal
Tel.: +351 210 410 600
Email lisbonfontanapark.events@hilton.com
www.lisbonfontanapark.doubletree.com

Discover the unique design of the **DoubleTree by Hilton Lisbon - Fontana Park**. Created from Lisbon's 20th-century metallurgical factory, our hotel features original details combined with contemporary geometry. The striking design and relaxing waterfall cascade in our outdoor Winter Garden have earned us several accolades in Design and Decoration since 2008.

Modern, innovative and cosmopolitan, the **DoubleTree by Hilton Lisbon - Fontana Park** offers you a privileged location in one of the main business centers of Lisbon. The hotel is located in the heart of the city, close to the historical center and the main attractions of the Portuguese capital as well as shopping areas. This Design Hotel is nearby fantastic beaches, golf courses and the Lisbon International Airport.

Regardless of the purpose of your stay, you will always be welcomed with warm Portuguese hospitality and a DoubleTree signature, warm welcome **DoubleTree Cookie**.

Don't forget to follow us:

 [@doubletreel Lisbon](https://www.instagram.com/doubletreel Lisbon)

 [@saldanha mar](https://www.facebook.com/saldanha mar)

 [@doubletreel Lisbon In](https://www.linkedin.com/company/doubletree Lisbon)

Rooms & Suite

GUEST ROOMS

Unwind in our contemporary King Guest Rooms decorated with elegant lines in black, grey and white tones. These rooms have a king-sized bed and stylish bathroom with black stone and glass. The rooms feature individually controlled air-conditioning, desk, laptop size safe and tea/coffee-making facilities.

KING PREMIUM ROOM WITH TERRACE

Located on the hotel's top floor, these awarded rooms have a private terrace showcasing Lisbon. Relax in this open-plan city-view rooms with a sitting area and wall-to-wall sliding doors. Refresh in the designer bathtub with polychromatic light therapy.

KING FAMILY ROOM & KING DELUXE ROOM

Discover this room with an exclusive all-white design, featuring a full-length window allowing the bright sun of Lisbon to enlighten the room in a unique way. The room offers a stylish white marble bathroom, fully bathed in natural daylight. The Family Room is ideal for families with children. The King Deluxe Room with Park view offers windows with a 90° view of the José Fontana Park and the local market, ideal for a city break.

SUITE

Indulge in a suite with a large terrace, perfect for dining and drinks, as well as relaxing in your own private space overlooking Lisbon. Relax in the sitting room or on the king-sized bed. The elegant bathroom offers designer amenities including a bathrobe and slippers.

Meetings & Events

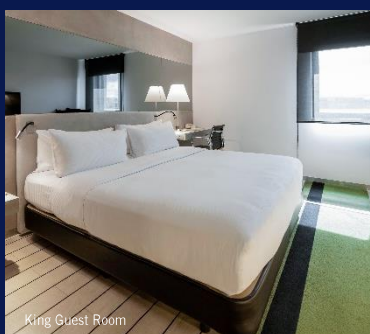
Planning events is one of the things we do best at DoubleTree by Hilton Lisbon - Fontana Park. Our property is an impressive venue for prestigious corporate events or banquets. Our rooms cater to all needs and our experienced team is ready to help with your plans and be with you every step of the way.

- Experienced Event Team
- 7 Meeting Rooms and 1 Gallery area
- Direct access for vehicles and equipment - Ideal for car launches
- WiFi and audiovisual equipment in all meeting rooms
- Meeting rooms designed with a simple wood floor
- Business Centre
- Parking with 157 lots

Our largest meeting is composed of 3 connected rooms - Liberdade I, II and III which have a capacity for over 400 people to host any large meetings & events.



King Family Room



King Guest Room

Amenities & Services

FITNESS CENTER

Stay fit while traveling with the Fitness Center powered by Techno Gym Machines equipped with treadmills, elliptical cross-trainers and bikes. Guests will also find strength and flexibility equipment, mats and room to stretch.



Dining

FONTANA BAR & LOUNGE

Set out to be a rendezvous for the early evening, with fine music, drinks or a light meal and genial conversation. A fashionable venue, with an exotic and trendy décor, to meet friends.

SALDANHA MAR RESTAURANT

With 10 years of experience, the Saldanha Mar restaurant stands out for its privileged location next to a local market and its connection to sustainable products. It is here that Chef Fábio Leonardo, passionate about Mediterranean and Portuguese cuisine, now brings to a new terrace a gastronomic experience that celebrates the vivacity of the sea and the freshness of local products, obtained sustainably at the Açucena Veloso Market.

WINTER GARDEN

Its Interior Court-Yard is the perfect place to relax any time of the day whilst having a snack or a drink. The waterfall's sound and the bamboo trees will transport your thoughts to faraway exotic places. A perfect place to chill- out in the city of Lisbon.



Things To Do

- Jerónimos Monastery, MAAT and Belém Tower
- Alfama district, National Tile Museum & Fado Museum
- Terreiro do Paço and Rua Augusta Arch
- Park and Palace of Pena (Sintra) and Cascais district
- Lisbon Oceanarium and Bairro Alto district

Location

Stay at a modern and awarded design hotel. Enjoy a superb location in the heart of Lisbon close to the city center, tourist attractions, shopping areas and golden beaches. We offer you an easy access to the Lisbon International Airport, Metro and Bus stations.

GPS: Latitude 38°43'52.73"N Longitude 9°8'38.45"W

